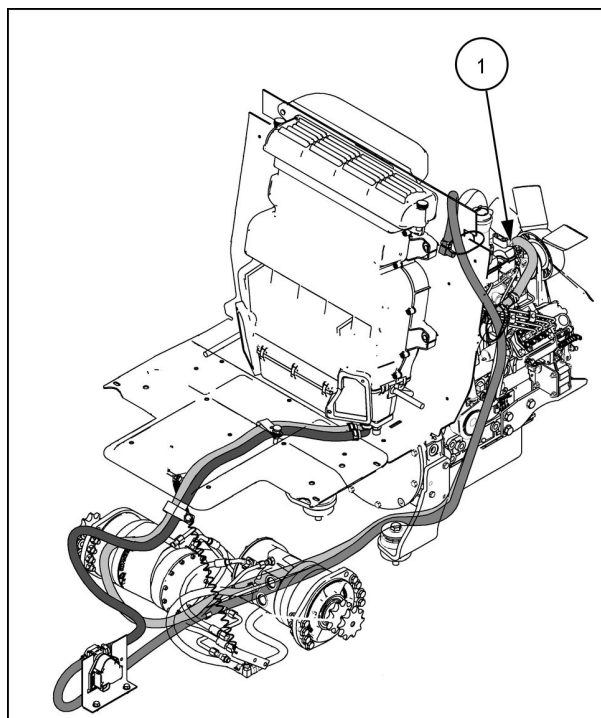
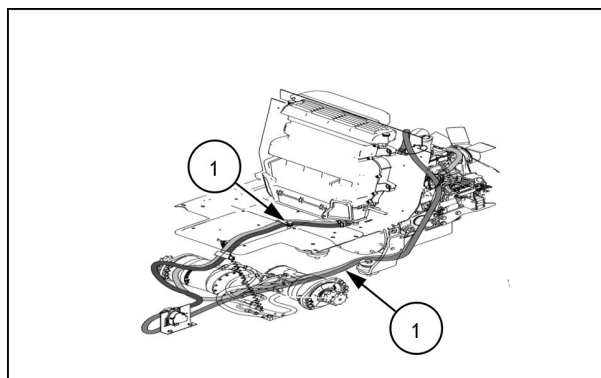


8. Disconnect the heater return hose (2), from water pump housing.



23112382 6

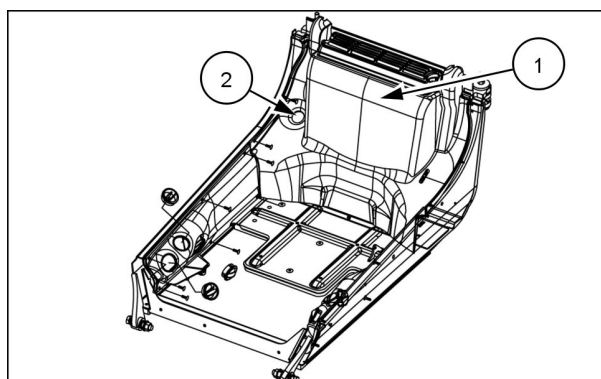
9. Remove the heater hoses (1), and all heater hose hardware from the machine. The hoses are mounted under the engine, between the flywheel side engine mounts.
10. Disconnect the chassis harness electrical connector from the water valve.



23112387D 7

11. Remove the headliner and left hand and right hand consoles.
12. Remove three fir tree fasteners, to remove the rear trim panel (1), over the heater box and washer bottle.

NOTE: Washer bottle cap (2), must be removed first.



93104640 8

Heater core - Remove

L218	
L220	

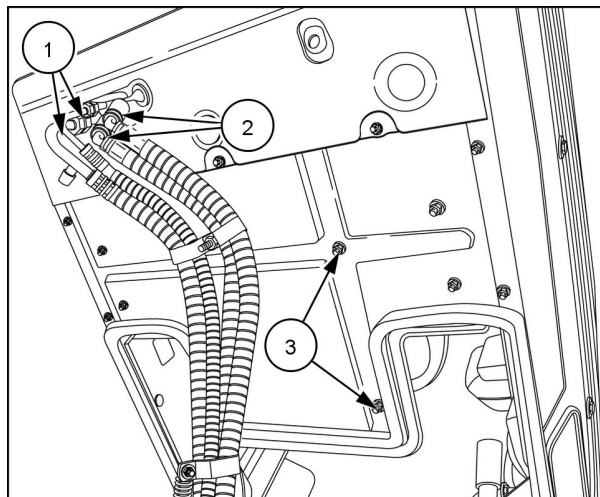
Prior operation:

Tilt the cab. Please see **Cab tilting system - Tilt (90.150)**

Prior operation:

Discharge the A/C (if applicable). Please see **Air conditioning - Discharging (50.200)**.

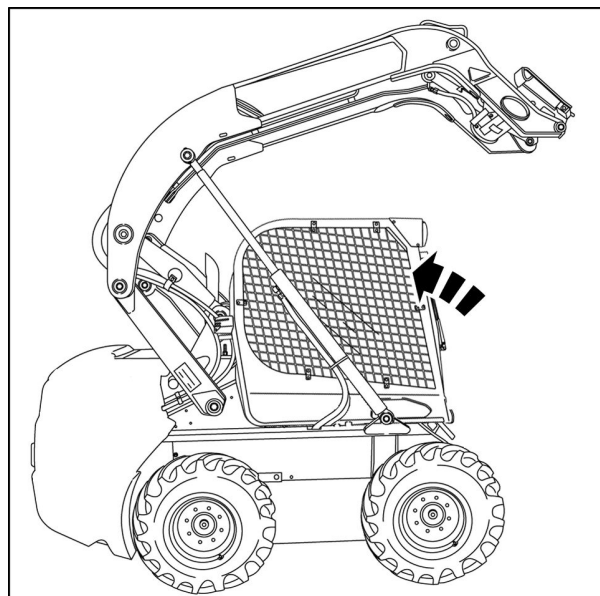
1. Detach the heater hoses (2) from the heater core.
2. Detach the A/C lines (1) from the evaporator (if applicable).
3. Remove the nuts (3), and detach the seat from the cab.



RAIL15SSL0042BA

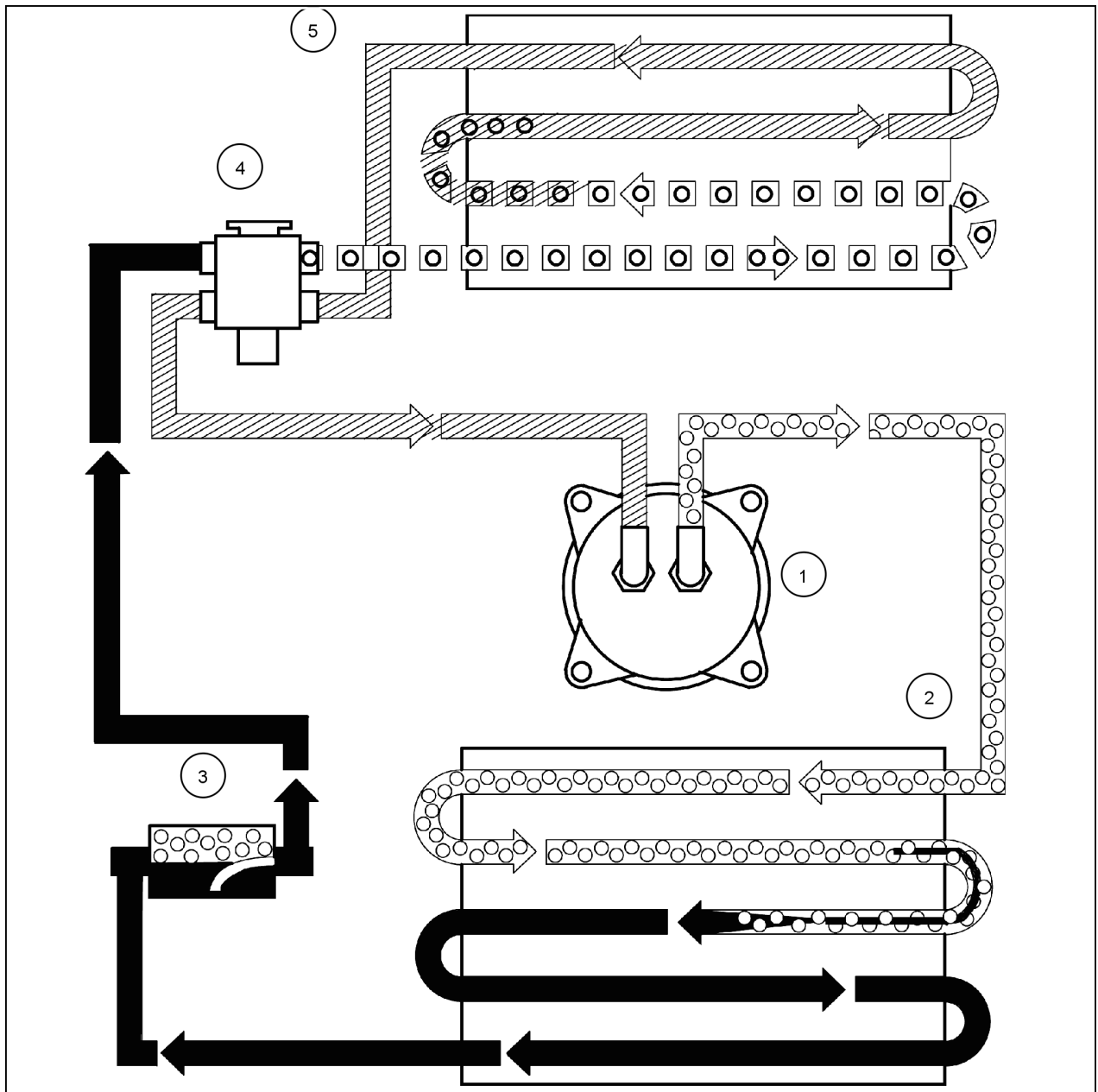
1

4. Carefully lower the cab. Please see **Cab tilting system - Lower (90.150)** for assistance.







RAPH14SSL0351BA

2



RCPH07CCH490ABC 1

	Low pressure gas	1. Compressor	4. Thermal expansion valve
	Low pressure liquid	2. Condenser	5. Evaporator
	High pressure gas	3. Receiver-drier	
	High pressure liquid		